



**Cannalytical
Labs**

CERTIFICATE OF ANALYSIS

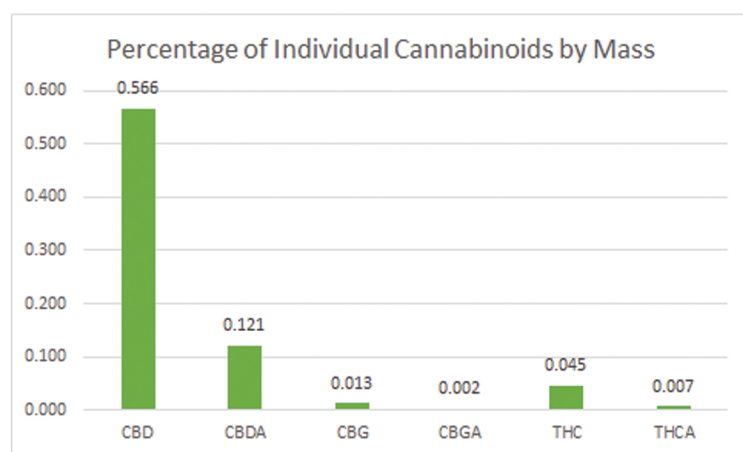
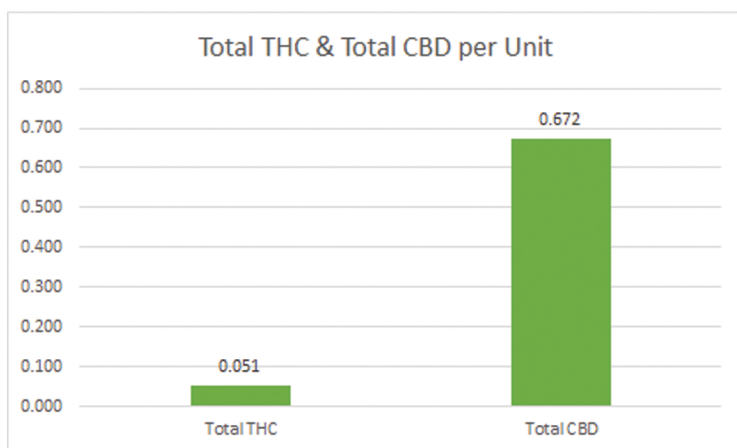
Report Prepared For

Monarch Hill Hemp
N3782 1000th St
Eau Claire WI 54703
715-456-4818
allegra@monarchhillhemp.com

License Number: 55_0106
Date Received: 03-18-2025
Report Date: 03-21-2025

Sample Name: Brighter Day Gummy
Sample Mass: 6.45 g

Sample Description: Infused Edible
Lab ID: 25503



Cannabinoid	mg/Unit	%
CBD	35.21	0.566
CBDA	7.50	0.121
CBG	0.80	0.013
CBGA	0.11	0.002
THC	2.80	0.045
THCA	0.42	0.007
Total Cannabinoids	46.84	0.75
Total THC	3.17	0.051
Total CBD	41.79	0.672
Total CBG	0.90	0.014
Total CBD: Total THC	13.19	



Analysis Method: GC FID
Total THC = (0.877 x THCA) + delta 9 THC
Total CBD = (0.877 x CBDA) + CBD
Total CBG = (0.877 x CBGA) + CBG
ND + None Detected

Prepared by: TMM
Analyzed by: TMM

Sample Intake Photo

Approved by: T. Mathews

Signature: *T. Mathews*

Date Signed: 03/21/2025

This is a Cannalytical Labs Certificate of Analysis and may not be reproduced without written approval from Cannalytical Labs. Cannalytical Labs maintains strict confidentiality of all client data. Any information regarding an analysis is shared only with the individuals designated on the Laboratory Chain of Custody (COC) as contacts unless authorization is received. Limits of Quantification (LOQ) are available upon request. This report complies to the requirements of the ISO/IEC 17025:2017 standard. Review the results, expanded uncertainty and specifications to ensure they meet your requirements. Uncertainty values are available upon request.